

Canal Inspection Record

- POW\_E01

Date2/09/09Time11:17

LocalityPowells Creek East Bank, Concord West

Level0.68mTideLow-Mid

LGACanada Bay



Co-Ords (MGA)

Start

E322550

N6252694

End

E322782

N6251892

Facility Details (Usage, Material, Const. Method, Type):

Concrete lined drainage canal with sloping sides. A steel fence is present along the length of the canal. Drainage is present at wall mid-height.

Condition Assessment:

The concrete panels that form the canal sides have cracked and failed along their lower half. The bed has also failed. Sinkholes are present behind the structure crest. The conditions improves to the south.

Excellent

Good

Poor

FailedX

Assets:

Fence prevents public access. The canal acts as a storm water control measure and is important for the surrounding infrastructure. A footbridges spans the canal.

Comments:

Saltmarsh is present in cracks between concrete panels and on the wall crest. Photos of structure are POW\_E01-01 to POW\_E01-14.

Photo 1

Typical condition of northern section of canal showing failure of sloping concrete wall.



Photo 2

Typical section of southern section of canal showing cracking of canal wall.





Canal Inspection Record

- POW\_W02

Date2/09/09Time11:27

LocalityPowells Creek West Bank, Homebush

Level0.68mTideLow-Mid

LGAStrathfield



Co-Ords (MGA)

Start

E322562

N6252590

End

E322769

N6251884

Facility Details (Usage, Material, Const. Method, Type):

Concrete lined drainage canal with sloping sides. A steel fence is present along the length of the canal. Drainage is present at wall mid-height.

Condition Assessment:

The concrete panels that form the canal sides have cracked and along their lower half. The bed is also cracking.

Sinkholes are present behind the structure crest. The conditions improves to the south.

Excellent

Good

Poor

Failed

X

Assets

Fence prevents public access. The canal acts as a storm water control measure and is important for the surrounding infrastructure. A footbridges spans the canal.

Comments:

Saltmarsh is present in cracks between concrete panels and on the wall crest. Photos of structure are POW\_W02-01 to POW\_W02-09.

Photo 1

Cracking and loss of concrete where sloping side meets bed.

Photo 2

Southern section of canal. Condition is better than at northern section.





# Canal Inspection Record

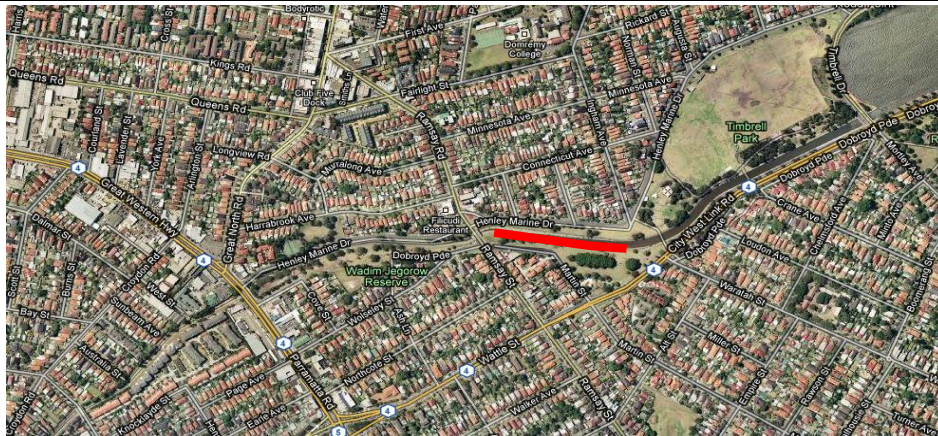
- DOB\_E03

Date 1/09/09  
Time 11:55

Locality Haberfield

Level 0.55  
Tide Low

LGA Ashfield



Co-Ords (MGA)

Start

E 327611  
N 6250326

End

E 327351  
N 6250358

Facility Details (Usage, Material, Const. Method, Type):

Concrete lined canal with sloping concrete panel sides. The canal is fenced. Drainage is present at the toe of the wall.

Condition Assessment:

The canal sides are cracking between the concrete panels. The concrete that forms both the sides and the bed is also weathered with aggregates visible.

Excellent  
Good  
Poor  
Failed

X

Assets:

The canal is fenced preventing public access. No other assets are supported by the structure.

Comments:

Photos of structure are DOB\_E03-01 to DOB\_E03-08.

Photo 1

View of canal.

Photo 2

Cracking and weathering of concrete.





Canal Inspection Record - DOB\_E04

Date 1/09/09 Locality Haberfield Level 0.55m LGA  
Time 12:15 Tide Low Ashfield



Co-Ords (MGA)  
Start  
E 327351  
N 6250358  
End  
E 326648  
N 6250074

Facility Details (Usage, Material, Const. Method, Type):  
Concrete lined canal with vertical concrete panel sides. The canal is fenced where public access is available. The Southern extent of the canal is not accessible. Drainage is present at the toe of the wall.

Condition Assessment:  
The canal wall is cracking between the concrete panels and also between the panels and the bed. The concrete that forms both the sides and the bed is also weathered with aggregates visible. The condition of the canal improves to the south east.

Excellent  
Good  
Poor X  
Failed

Assets:  
The canal is fenced or public access is not available. The banks support bridge abutments for Ramsay St and the M4.

Comments:  
Photos of structure are DOB\_E04-01 to DOB\_E04-25.

Photo 1  
View of southern western extent of canal.



Photo 2  
Cracking and weathering of concrete between sides and bed at north eastern extent.





Canal Inspection Record

- DOB\_W03

Date	1/09/09	Locality	Five Dock	Level	0.55m	LGA
Time	11:55			Tide	Low	Canada Bay



Co-Ords (MGA)

Start

E 327654

N 6250350

End

E 327358

N 6250374

Facility Details (Usage, Material, Const. Method, Type):

Concrete lined canal with sloping concrete panel sides. The canal is fenced. Drainage is present at the toe of the wall.

Condition Assessment:

The canal is cracking between the concrete panels. The concrete that forms both the sides and the bed is also weathered with aggregates visible.

Excellent	<input type="checkbox"/>
Good	<input type="checkbox"/>
Poor	<input checked="" type="checkbox"/>
Failed	<input type="checkbox"/>

Assets:

The canal is fenced preventing public access. No other assets are supported by the structure.

Comments:

Photos of structure are DOB\_W03-01 to DOB\_W03-04.

Photo 1

View of canal.

Photo 2

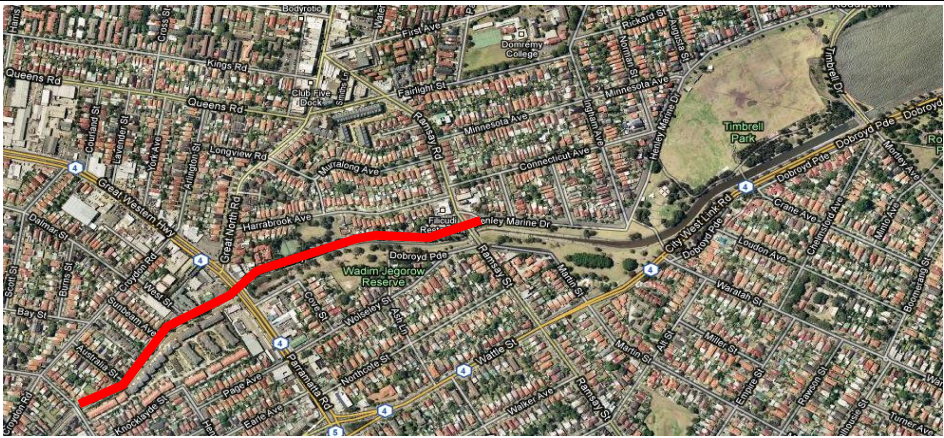
Cracking and weathering of concrete.





Canal Inspection Record - DOB\_W04

Date 1/09/09 Locality Haberfield Level 0.55 LGA Ashfield  
Time 12:20 Tide Low



Co-Ords (MGA)  
Start  
E 327358  
N 6250374  
End  
E 326648  
N 6250074

Facility Details (Usage, Material, Const. Method, Type):  
Concrete lined canal with vertical concrete panel sides. The canal is fenced where public access is available. The Southern extent of the canal is not accessible. Drainage is present at the toe of the wall.

Condition Assessment:  
The canal wall is cracking between the concrete panels and also between the panels and the bed. The concrete that forms both the sides and the bed is also weathered with aggregates visible. Leachate is present from the wall.  
The condition of the canal improves to the south east.

Excellent  
Good  
Poor X  
Failed

Assets:  
The canal is fenced or public access is not available. The banks support bridge abutments for Ramsay St and the M4.

Comments:  
Photos of structure are DOB\_W04-01 to DOB\_W04-24.

Photo 1  
View of southern western extent of canal.

Photo 2  
Corrosion of concrete with leachate shown.





# Canal Inspection Record

- BPW\_E02

Date	<u>1/09/09</u>	Locality	<u>Cintra Park, Concord</u>	Level	<u>1.06m</u>	LGA	<u>Canada Bay</u>
Time	<u>14:25</u>			Tide	<u>Mid</u>		



## Co-Ords (MGA)

### Start

E 325495

N 6251607

### End

E 325280

N 6250994

## Facility Details (Usage, Material, Const. Method, Type):

Concrete lined canal with sloping concrete panel sides. The canal is fenced and a public footpath is present adjacent.

## Condition Assessment:

Concrete panels are cracked and weathered. Many have collapsed backwards due to a loss of fines from behind the wall. The concrete bed has corroded with aggregates visible.

Excellent

Good

Poor

Failed

X

## Assets:

Fence prevents public access. The canal supports Lyons Road at its north western extent and a footbridge at its southern extent although there are no issues relating to these at present.

## Comments:

Photos of structure are BPW\_E02-01 to BPW\_E02-013.

## Photo 1

Typical view of structure.

## Photo 2

Collapsed concrete panels.





# Canal Inspection Record

- BPW\_W02

Date	1/09/09	Locality	Cintra Park, Concord	Level	1.06m	LGA	Concord
Time	14:25			Tide	Mid		Canada Bay



## Co-Ords (MGA)

### Start

E 325485

N 6251613

### End

E 325273

N 6250995

## Facility Details (Usage, Material, Const. Method, Type):

Concrete lined canal with sloping concrete panel sides. The canal is fenced and a public footpath is present adjacent.

## Condition Assessment:

Concrete panels are cracked and weathered. Many have collapsed backwards due to a loss of fines from behind the wall. The concrete bed has corroded with aggregates visible.

Excellent

Good

Poor

Failed

X

## Assets:

Fence prevents public access. The canal supports Lyons Road at its north western extent and a footbridge at its southern extent although there are no issues relating to these at present.

## Comments:

Photos of structure are BPW\_W02-01 to BPW\_W02-022.

## Photo 1

Typical view of structure.

## Photo 2

Collapsed concrete panels.





Canal Inspection Record - HAS\_E07

Date 2/09/09      Locality Upstream & Downstream of M4      Level 0.77m  
Time 14:30      Tide Low-Mid      LGA Auburn



Co-Ords (MGA)  
Start  
E 319738  
N 6253093  
End  
E 319419  
N 6252983

Facility Details (Usage, Material, Const. Method, Type):  
Concrete lined canal with concrete bed and sloping concrete panel sides. No public access is available. Industrial warehouses are present beyond the structure.

Condition Assessment:  
Minor cracking and weathering of concrete observed. Cracks are particularly evident between concrete panels.  
The wall is cracking beneath the eastern abutment of Parramatta Road.

Excellent  
Good  
Poor  
Failed

X

Assets:  
The bank supports abutments for two road bridges and is cracking beneath one.

Comments:  
Photos of structure are HAS\_E07-01 to HAS\_E07-09.

Photo 1  
Cracking between concrete panels.

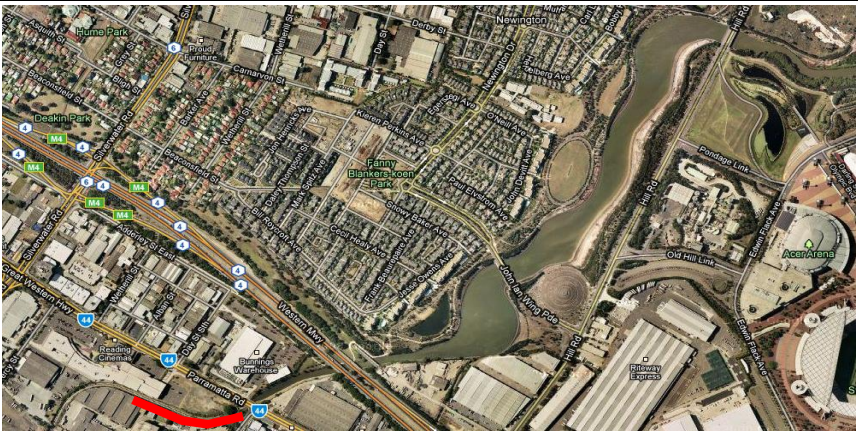
Photo 2  
Cracks beneath eastern abutment of Parramatta Road.





Canal Inspection Record - HAS\_E08

Date 2/09/09 Locality Sydney Olympic Park Level 0.77m  
Time 14:23 Tide Low-Mid LGA Auburn



Co-Ords (MGA)

Start  
E 319419  
N 6252983  
End  
E 319188  
N 6252978

Facility Details (Usage, Material, Const. Method, Type):  
Concrete lined canal with concrete bed and vertical concrete panel sides. No public access is available.

Condition Assessment:  
Minor cracking and weathering of concrete observed. Cracks are particularly evident between concrete panels.  
Condition worsens to the south.

Excellent  
Good  
Poor  
Failed

X

Assets:  
The bank supports abutments for Parramatta Road however no issues relating to this at present

Comments:  
Photos of structure are HAS\_E08-01 to HAS\_E08-06.

Photo 1  
Typical view of concrete canal.

Photo 2  
Cracking and weathering of vertical concrete wall between panels.





Canal Inspection Record

- HAS\_W05

Date2/09/09Time14:15

LocalityParramatta Road, Lidcombe

Level0.77mTideLow-Mid

LGA  
Auburn



Co-Ords (MGA)

Start

E319188

N6252978

End

E319409

N6252989

Facility Details (Usage, Material, Const. Method, Type):

Concrete lined canal with concrete bed and vertical concrete panel sides. No public access is available.

Condition Assessment:

Minor cracking and weathering of concrete observed. Cracks are particularly evident between concrete panels.

Condition worsens to the south.

Excellent

Good

Poor

Failed

X

Assets:

The bank supports abutments for Parramatta Road

Comments:

Photos of structure are HAS\_W05-01 to HAS\_W05-04.

Photo 1

Typical view of concrete canal.

Photo 2

Minor cracking and weathering of vertical concrete wall.

