

Seawall Inspection Record - AUB_S02

Date 18/08/09 Locality Homebush Bay Level 0.39m LGA Auburn
 Time 11:27 Tide Low



Co-Ords (MGA)

Start
 E 322035
 N 6254594
 End
 E 321893
 N 6254729

Seawall Details (Slope, Material, Const. Method, Type):

Variable sized rubble and building waste revetment with a new concrete footpath on the crest. A new residential development is located on the land beyond the structure. A public footbridge is located on the structure crest.

Condition Assessment (Slope, Crest, Toe, Backfill):

Material has been lost from slope exposing soil/fill beneath. It appears a support of the footbridge has been undermined.

Excellent
 Good
 Poor
 Failed

X

Assets:

Footbridge and public footpath is supported by revetment which is in poor condition.

Comments:

Photos of structure, AUB_S02-01 to AUB_S02-05.

Photo 1

Apparent undermining of footbridge support.



Photo 2

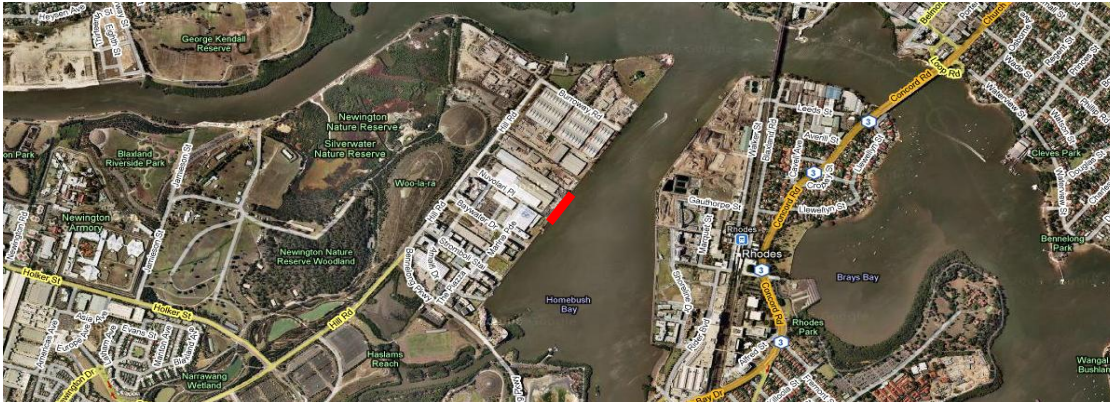
Loss of material from slope at eastern extent of revetment exposing soil/fill beneath



Seawall Inspection Record

- AUB-S04

Date	31/08/09	Locality	Homebush Bay	Level	0.74m	LGA	Auburn
Time	9:48			Tide	Low-Mid		



Co-Ords (MGA)	
Start	
E	322171
N	6255135
End	
E	322259
N	6255261

Seawall Details (Slope, Material, Const. Method, Type):

Ad-hoc rubble revetment with a soil/fill embankment forming the crest. Private industrial land is located beyond the structure crest. A steel fence is present along the structure crest.

Condition Assessment (Slope, Crest, Toe, Backfill):

The rubble that forms the revetment has become dislodged and is strewn across the toe. There is also a large erosion scarp behind the structure indicating inundation during periods of elevated water levels.

Excellent

Good

Poor

Failed

X

Assets

None supported. Public access and the foreshore is fenced from staff at the adjacent industrial land.

Comments:

Photos of structure, AUB_S04-01 to AUB_S04-04.

Photo 1

Typical section of revetment.

Photo 2

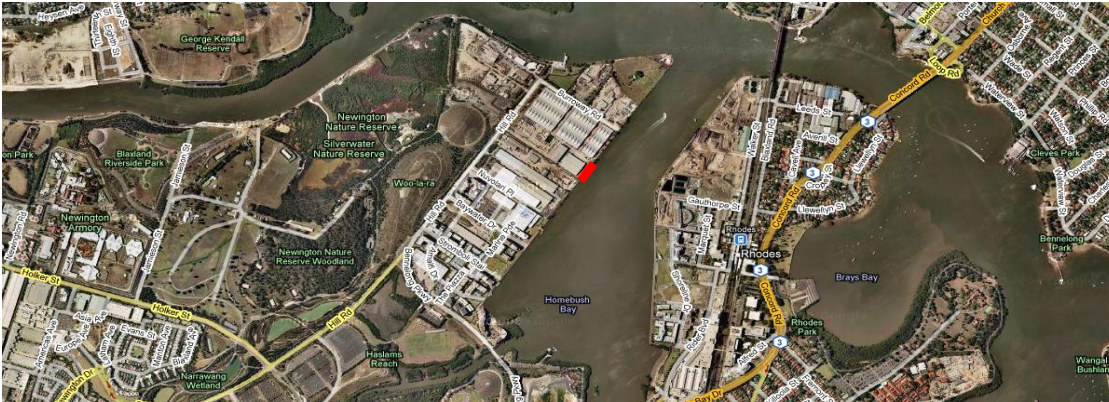
Loss of rubble material and large erosion scarp at the crest.



Seawall Inspection Record

- AUB_S06

Date	31/08/09	Locality	Homebush Bay	Level	0.74m	LGA	Auburn
Time	10:00			Tide	Low-Mid		



Co-Ords (MGA)

Start

E 322302

N 6255325

End

E 322337

N 6255377

Seawall Details (Slope, Material, Const. Method, Type):

Sandstone block revetment with a soil/fill embankment forming the crest. Private industrial land is located beyond the structure crest.

Condition Assessment (Slope, Crest, Toe, Backfill):

The blocks that forms the revetment are slumping and have become dislodged due to a loss of fine material from behind. There is also a large erosion scarp behind the structure indicating inundation during periods of elevated water levels.

Excellent

Good

Poor

Failed

X

Assets

No public access is available. Staff from industrial property can access structure edge.

Comments:

Photos of structure, AUB_S06-01 to AUB_S06-05.

Photo 1

Typical section of revetment.



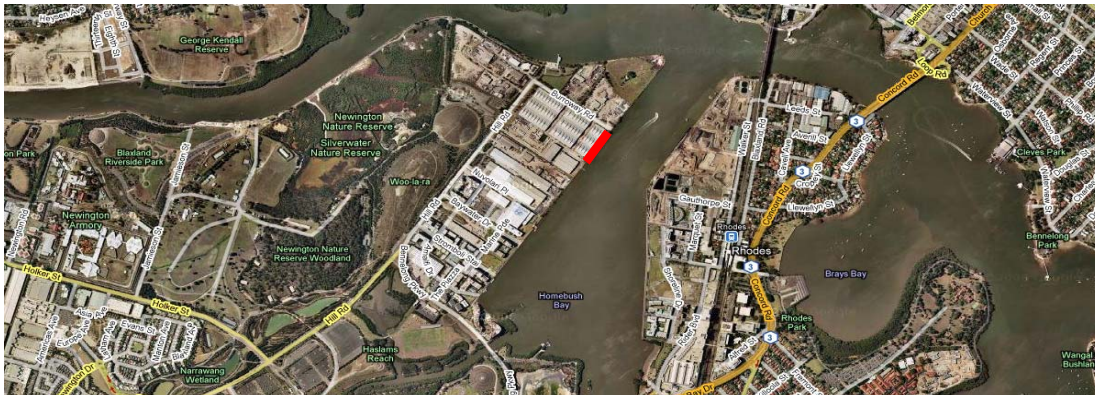
Photo 2

Slumping of revetment and erosion of bank behind.



Seawall Inspection Record - AUB_S07

Date	<u>31/08/09</u>	Locality	<u>Homebush Bay</u>	Level	<u>0.74m</u>	LGA	<u>Auburn</u>
Time	<u>10:09</u>			Tide	<u>Low-Mid</u>		



Co-Ords (MGA)

Start
 E 322337
 N 6255377

End
 E 322454
 N 6255548

Seawall Details (Slope, Material, Const. Method, Type):

Sandstone block revetment with concrete capping on the slope and crest. Private industrial land is located beyond the structure crest.

Condition Assessment (Slope, Crest, Toe, Backfill):

The concrete capping has cracked and failed along the lower section of the wall. The older blocks that forms the revetment are slumping.

Excellent
 Good
 Poor
 Failed

X

Assets

No public access is available. Staff from industrial property can access structure edge.

Comments:

Photos of structure, AUB_S07-01 to AUB_S07-05.

Photo 1

Typical section of revetment.

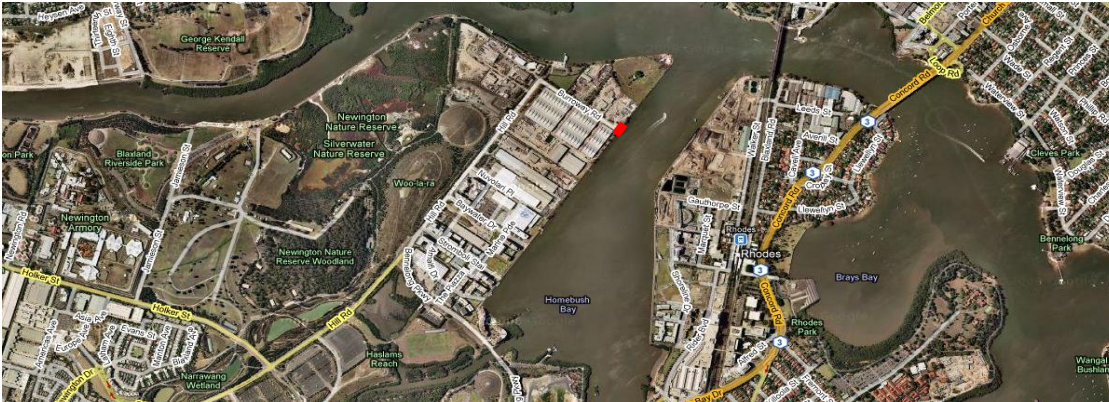
Photo 2

Cracked and failed concrete capping with older sandstone block revetment visible.



- AUB_S08

Date	<u>31/08/09</u>	Locality	Homebush Bay	Level	<u>0.74m</u>	LGA
Time	<u>10:13</u>			Tide	<u>Low-Mid</u>	<u>Auburn</u>



Co-Ords (MGA)

Start

E	322454
---	--------

N 6255548

End

E 322472

N	6255573
---	---------

Seawall Details (Slope, Material, Const. Method, Type):

Small concrete block wall with a sloping concrete crest at the conclusion of Burroway Road. Steel bollards are present along the crest.

Condition Assessment (Slope, Crest, Toe, Backfill):

The sloping concrete crest has cracked and failed in places with large voids observed. The blocks that form the toe of the structure are slumping.

Excellent

Good

Poor

Failed

X

Assets

Public access is available and the structure forms the end of Burroway Road. If the structure is allowed to continue to deteriorate OH&S and asset issues may arise.

Comments:

Photos of structure, AUB_S08-01 to AUB_S08-04.

Photo 1

Typical section of revetment.

Photo 2

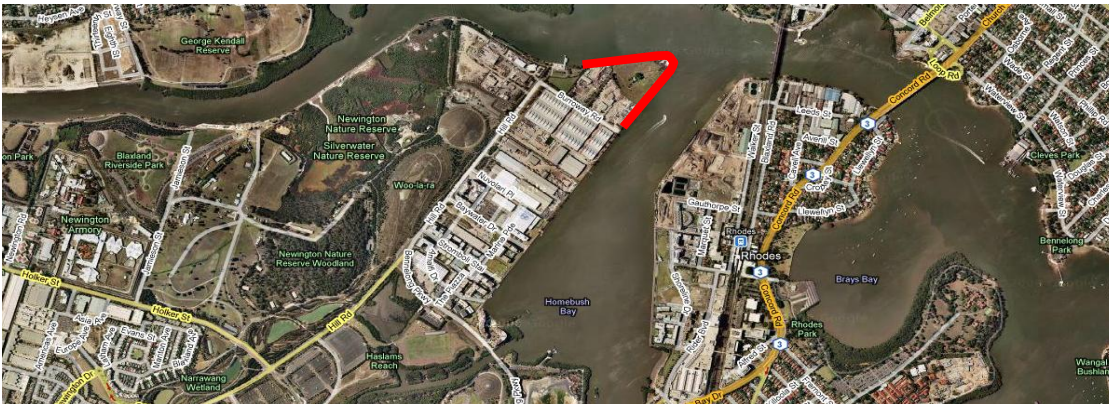
Cracked and failed concrete crest with voids present and slumping of concrete blocks.



Seawall Inspection Record

- AUB_S09

Date	31/08/09	Locality	Wentworth Point, Homebush Bay	Level	0.74m	LGA	Auburn
Time	10:15			Tide	Low-Mid		



Co-Ords (MGA)

Start

E 322472

N 6255573

End

E 322320

N 6255875

Seawall Details (Slope, Material, Const. Method, Type):

Small sandstone block revetment with an earthen bank beyond crest. An undeveloped parcel of land is located beyond the structure and contains a radio tower. A number of abandoned facilities are present at the southern extent of the revetment. Public access is not available.

Condition Assessment (Slope, Crest, Toe, Backfill):

The revetment has failed with material lost from the crest and strewn across the muddy flat in front. A large erosion scarp is present at the crest which increases on the Parramatta River side where it is exposed to ferry wash.

Excellent

Good

Poor

Failed

<input type="checkbox"/>
<input type="checkbox"/>
<input type="checkbox"/>
<input checked="" type="checkbox"/>

Assets

Public access is not available and the revetment does not support any structures.

Comments:

Photos of structure, AUB_S09-01 to AUB_S09-18.

Photo 1

Typical section of revetment with abandoned facility shown.

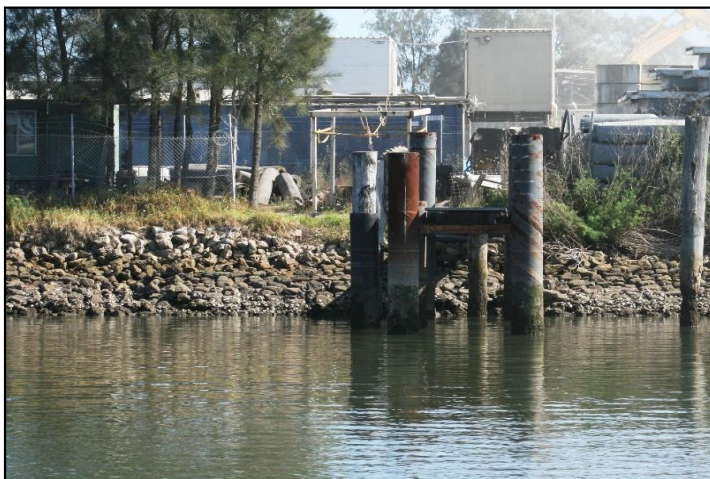


Photo 2

Erosion scarp where material has been lost due to exposure to ferry wash.



Canal Inspection Record

- HAS_E07

Date2/09/09Time14:30

LocalityUpstream & Downstream of M4

Level0.77mTideLow-Mid

LGA

Auburn



Co-Ords (MGA)

Start

E319738

N6253093

End

E319419

N6252983

Facility Details (Usage, Material, Const. Method, Type):

Concrete lined canal with concrete bed and sloping concrete panel sides. No public access is available. Industrial warehouses are present beyond the structure.

Condition Assessment:

Minor cracking and weathering of concrete observed. Cracks are particularly evident between concrete panels.

The wall is cracking beneath the eastern abutment of Parramatta Road.

Excellent

Good

Poor

Failed

X

Assets:

The bank supports abutments for two road bridges and is cracking beneath one.

Comments:

Photos of structure are HAS_E07-01 to HAS_E07-09.

Photo 1

Cracking between concrete panels.

Photo 2

Cracks beneath eastern abutment of Parramatta Road.



Canal Inspection Record - HAS_E06

Date	2/09/09	Tide	Low-Mid	Level	0.77m	LGA
Time	14:35	Locality	Hill Road, Homebush Bay	People	TP/ET	Auburn



Co-Ords (MGA)

Start
E 319939
N 6253109

Facility Details (Usage, Material, Const. Method, Type):
Concrete lined canal with concrete bed and sloping concrete panel sides. No public access is available. Industrial warehouses are present beyond the structure.

Condition Assessment:	Excellent
Minor cracking and weathering of concrete observed. Cracks are particularly evident between concrete panels.	Good
	Poor
	Failed

Assets:
The bank does not support any other structures.

Comments:
Photos of structure are HAS_E06-01 and HAS_E06-02.

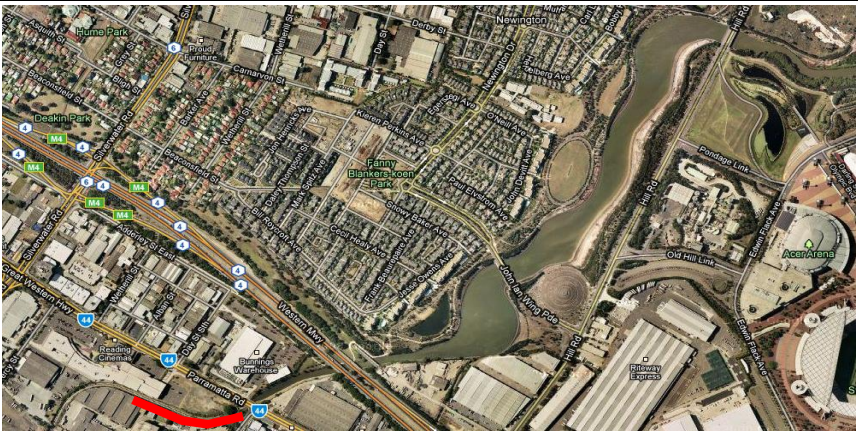
Photo 1
Typical section of concrete bank.

Photo 2
Cracks between concrete panels that form canal bank.



Canal Inspection Record - HAS_E08

Date 2/09/09 Locality Sydney Olympic Park Level 0.77m
Time 14:23 Tide Low-Mid LGA Auburn



Co-Ords (MGA)
Start
E 319419
N 6252983
End
E 319188
N 6252978

Facility Details (Usage, Material, Const. Method, Type):
Concrete lined canal with concrete bed and vertical concrete panel sides. No public access is available.

Condition Assessment:
Minor cracking and weathering of concrete observed. Cracks are particularly evident between concrete panels.
Condition worsens to the south.

Excellent	
Good	
Poor	X
Failed	

Assets:
The bank supports abutments for Parramatta Road however no issues relating to this at present

Comments:
Photos of structure are HAS_E08-01 to HAS_E08-06.

Photo 1
Typical view of concrete canal.

Photo 2
Cracking and weathering of vertical concrete wall between panels.



Canal Inspection Record

- HAS_W05

Date	<u>2/09/09</u>	Locality	<u>Parramatta Road, Lidcombe</u>	Level	<u>0.77m</u>	LGA	<u>Auburn</u>
Time	<u>14:15</u>			Tide	<u>Low-Mid</u>		



Co-Ords (MGA)

Start

E 319188
N 6252978

End

E 319409
N 6252989

Facility Details (Usage, Material, Const. Method, Type):

Concrete lined canal with concrete bed and vertical concrete panel sides. No public access is available.

Condition Assessment:

Minor cracking and weathering of concrete observed. Cracks are particularly evident between concrete panels.
Condition worsens to the south.

Excellent

Good

Poor

Failed

X

Assets:

The bank supports abutments for Parramatta Road

Comments:

Photos of structure are HAS_W05-01 to HAS_W05-04.

Photo 1

Typical view of concrete canal.

Photo 2

Minor cracking and weathering of vertical concrete wall.



Facility Inspection Record

- AUB_F05

Date	<u>31/08/09</u>	Locality	<u>Homebush Bay</u>	Level	<u>0.74m</u>	LGA	<u>Auburn</u>
Time	<u>10:04</u>			Tide	<u>Low-Mid</u>		



Co-Ords (MGA)

Start
 E 322341
 N 6255368

Facility Details (Usage, Material, Const. Method, Type):

Private timber wharf with a set of timber sea stairs supported by timber piles and the adjacent seawall. A steel rail is present around the perimeter of the structure. Although private, the facility is accessible to staff from the adjacent industrial property.

Condition Assessment:

A number of the timber piles have failed at the water line. All other components are showing signs of deterioration.

Excellent
 Good
 Poor
 Failed

X

Issues:

The piles have failed and the structure may collapse if no action is taken.

Comments:

Photos of facility, AUB_F05-01 to AUB_F05-08.

Photo 1

View of facility.

Photo 2

Failed timber piles.



Facility Inspection Record

- AUB_F03

Date	<u>18/08/09</u>	Locality	<u>Homebush Bay</u>	Level	<u>0.39m</u>	LGA	<u>Auburn</u>
Time	<u>11:47</u>			Tide	<u>Low</u>		



Co-Ords (MGA)

Start
 E 321962
 N 6254824

Facility Details (Usage, Material, Const. Method, Type):

Timber landing supported by timber piles and the adjacent seawall, AUB_S05. A low timber rail is present around the perimeter of the structure. The southern most pile has been replaced recently. Large umbrellas for shade have been installed on the structure.

Condition Assessment:

Apart from the new pile at the southern end of the structure, all timber piles have failed at the water line. Other timber components are showing signs of deterioration.

Excellent
 Good
 Poor
 Failed

X

Issues:

The piles have failed and the structure may collapse if no action is taken. Umbrellas and adjacent residential development mean structure is well utilised by the public. The structure edge is well defined by timber rail.

Comments:

Photos of facility, AUB_F03-01 to AUB_F03-07.

Photo 1

View of facility.

Photo 2

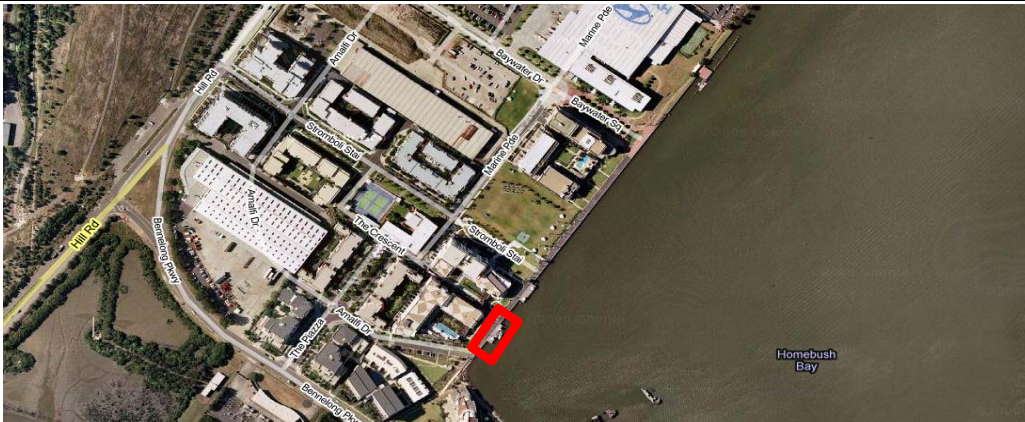
Failure of timber piles at the water line.



Facility Inspection Record

- AUB_F02

Date	18/08/09	Locality	Homebush Bay	Level	0.39m	LGA	Auburn
Time	11:41			Tide	Low		



Co-Ords (MGA)

Start
E 321929
N 6254774

Facility Details (Usage, Material, Const. Method, Type):

Timber landing with three levels of timber sea stairs. The structure is supported by timber piles and the adjacent seawall, AUB_S05. A low timber rail is present around the perimeter of the structure. The bed around the structure is exposed at low tide. Two large shade umbrellas have been installed on the structure.

Condition Assessment:

Timber piles are severely deteriorated at the water line. Other timber components are showing signs of deterioration. A number of timber stairs have been replaced.

Excellent
Good
Poor
Failed

X

Issues:

The piles are in poor condition and may fail if not replaced. Access to structure from the water is difficult at low tide. Umbrellas and adjacent residential development mean structure is well utilised by the public. The structure edge is well defined by timber rail.

Comments:

Photos of facility, AUB_F02-01 to AUB_F02-04.

Photo 1

View of facility.

Photo 2

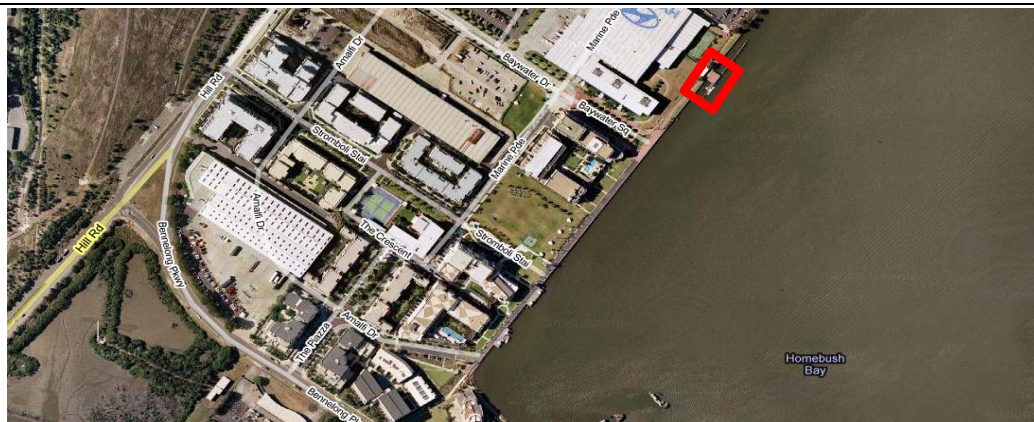
Severe deterioration of timber piles at the water line.



Facility Inspection Record

- AUB_F04

Date	<u>18/08/09</u>	Locality	<u>Homebush Bay</u>	Level	<u>0.39m</u>	LGA	<u>Auburn</u>
Time	<u>11:54</u>			Tide	<u>Low</u>		



Co-Ords (MGA)

Start
E 322143
N 6255084

Facility Details (Usage, Material, Const. Method, Type):

Timber landing supported by timber piles and the adjacent seawall, AUB_S05. Deck is constructed from concrete panels and timber slats. Two large umbrellas have been installed on the structure for shade. A steel ladder provides access to the water. A fenced private gangway and floating pontoon are accessed from the structure.

Condition Assessment:

Timber piles and other components are showing signs of deterioration.

Excellent
Good
Poor
Failed

X

Issues:

Although not as urgent as the two other facilities at this location (AUB_F03 & AUB_F04), the piles are in poor condition and may fail if not replaced. Umbrellas and adjacent residential development mean structure is well utilised by the public. The structure edge is not defined.

Comments:

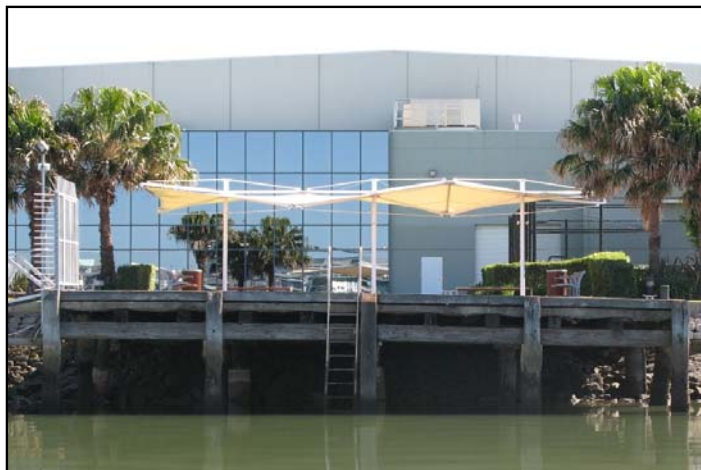
Photos of facility, AUB_F04-01 to AUB_F04-05.

Photo 1

View of facility.

Photo 2

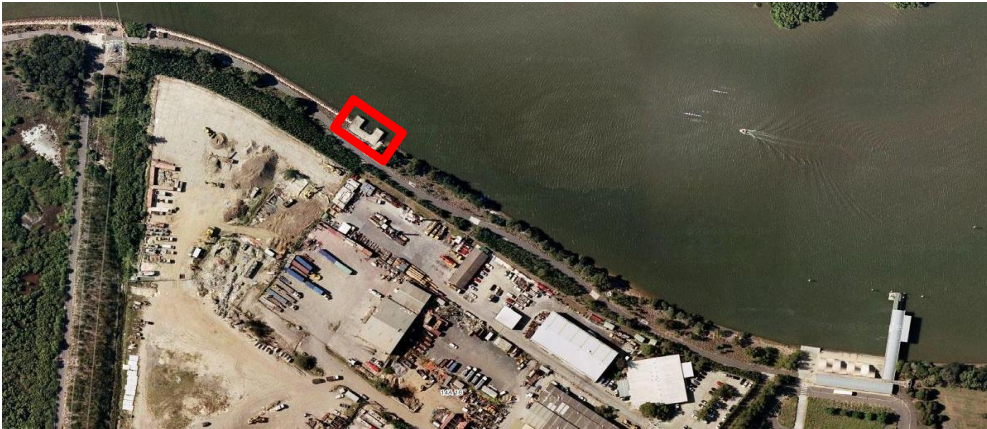
Deterioration of timber piles and other components.



Facility Inspection Record

- AUB_F07

Date	19/08/09	Locality	North West of Homebush Ferry Wharf	Level	0.71m	LGA	Auburn
Time	14:25			Tide	Low-Mid		



Co-Ords (MGA)

Start

E 321914

N 6256020

Facility Details (Usage, Material, Const. Method, Type):

Concrete landing supported by concrete piles north west of Homebush Ferry Wharf. The structure is fenced off from the adjacent footpath/cycleway. Old timber fender piles are present in front of the structure.

Condition Assessment:

The structure appears condemned/abandoned with severe corrosion of concrete beams beneath landing exposing reinforcement.

Excellent

Good

Poor

Failed

<input type="checkbox"/>
<input type="checkbox"/>
<input type="checkbox"/>
<input checked="" type="checkbox"/>

Issues

Fenced off to public access. The structure does not support any other assets.

Comments:

Photos of facility, AUB_F07-01 to AUB_F07-03.

Photo 1

View of facility.

Photo 2

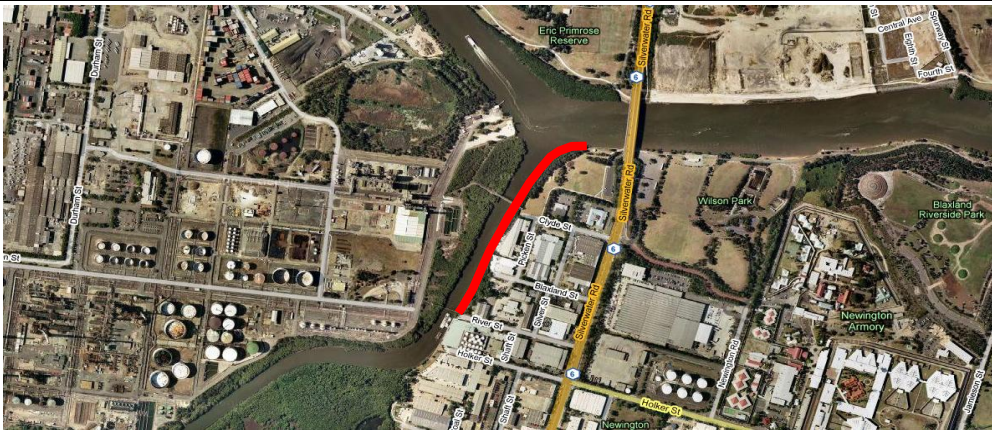
Corrosion of concrete beam exposing reinforcement.



Natural Shoreline Inspection Record

- AUB_NS01

Date	20/08/09	Locality	Duck River Eastern Bank	Level	0.67m	LGA	Auburn
Time	15:51			Tide	Low-Mid		



Co-Ords (MGA)

Start

E 319562
N 6255574

End

E 319251
N 6255134

Details (Vegetation, Slope, Toe):

Muddy shoreline vegetated with mangroves from confluence with Parramatta River to industrial dock on eastern bank of Duck River. The area is exposed to vessel wash at the confluence. A public park is located beyond the mangroves at the confluence.

Condition Assessment:

Erosion observed with undermining and loss of fine material from pneumatophores due to exposure to vessel wash. The condition of the shoreline improves upstream of the confluence in the Duck River.

Excellent
Good
Poor
Failed

X

Issues:

No major issues relating to this location at present, public access is available from Silverwater Park.

Comments:

Photos of foreshore AUB_NS01-01 to AUB_NS01-16.

Photo 1

Loss of fine material and undermining of mangroves.



Photo 2

Ferry wash at Duck and Parramatta Rivers confluence.

