

Seawall Inspection Record - HUN_S01

Date	<u>5/08/09</u>	Locality	<u>Clarkes Point, River North</u>	Level	<u>0.80m</u>	LGA	<u>Hunters Hill</u>
Time	<u>14:35</u>			Tide	<u>Low-Mid</u>		



Co-Ords (MGA)

Start
 E 331042
 N 6253968

End
 E 330825
 N 6253769

Seawall Details (Slope, Material, Const. Method, Type):

Vertical large grouted sandstone block seawall. The crest was approx. 1.5m above the water level at time of inspection. An old abandoned boat ramp is located at the southern section of the structure.

Condition Assessment (Slope, Crest, Toe, Backfill):

Numerous block failures of the crest were observed with blocks fallen into water below. Surface weathering of the sandstone blocks and sinkholes behind structure crest were also observed.

Excellent
 Good
 Poor
 Failed

X

Assets:

General public access is available with no barrier to differentiate the wall edge. Access to the water is possible using the old abandoned boat ramp which is mossy and slippery.

Comments:

Abandoned boat ramp is located at (WP 225 330950, 6253785). Photos HUN_S01-01 to HUN_S01-22

Photo 1

Typical section of seawall showing failure of blocks at crest, surface weathering and loss of grout material.



Photo 2

Slumping of sandstone blocks.



Seawall Inspection Record - HUN_S02

Date 5/08/09 Locality Clarkes Point, River North Level 0.80m LGA Hunters Hill
Time 14:15 People Low-Mid



Co-Ords (MGA)

Start
E 330825
N 6253769

End
E 330609
N 6253786

Seawall Details (Slope, Material, Const. Method, Type):

Vertical large grouted sandstone block seawall. The crest was approx. 1.5m above the water level at time of inspection. A punt operates from the eastern extent of the wall to Cockatoo Island

Condition Assessment (Slope, Crest, Toe, Backfill):

Numerous block failures of the crest were observed with blocks fallen into water below.
Surface weathering of the sandstone blocks and sinkholes behind structure crest were also observed. Western section is in better condition.

Excellent
Good
Poor
Failed

X

Assets

General public access is available with no barrier to differentiate the wall edge. Access to the water is possible using ramp associated with the punt.

Comments:

Photos HUN_S02-01 to HUN_S02-06

Photo 1

Typical section of seawall showing failure of blocks at crest, surface weathering and loss of grout material.



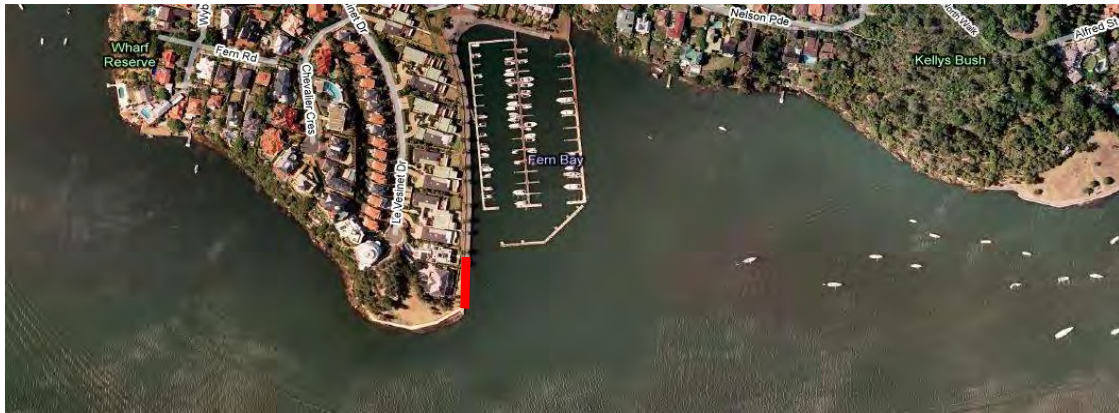
Photo 2

Western section of the seawall leading to boat ramp is in better condition than the rest of the structure



Seawall Inspection Record - HUN_S04

Date	<u>5/08/09</u>	Locality	<u>Pulpit Point, River North</u>	Level	<u>0.49m</u>	LGA	<u>Hunters Hill</u>
Time	<u>12:54</u>			Tide	<u>Low</u>		



Co-Ords (MGA)

Start

E 329945
N 6253602

End

E 329944
N 6253552

Seawall Details (Slope, Material, Const. Method, Type):

Medium size grouted sandstone block seawall with one layer of newer blocks along crest associated with development of the foreshore. The crest was approx. 2m above the water level at time of inspection.

Condition Assessment (Slope, Crest, Toe, Backfill):

Grout is missing from the lower blocks with extensive slumping and cavities observed. A number of localised block failures at the seawall toe were also observed. The newer, top layer is in good condition with grouting present.

Excellent
Good
Poor
Failed

X

Assets

General public access is available via adjacent park although there is no formalised footpath or barrier differentiating the wall edge. No significant assets are located on or near the structure.

Comments:

The structure continues beneath the private marina located at Fern Bay. Photos HUN_S04-01 to HUN_S04-05

Photo 1

Typical view of seawall.

Photo 2

Block failure at toe and loss of grout and clumping of lower, older sandstone blocks.



Seawall Inspection Record - HUN_S05

Date	<u>5/08/09</u>	Locality	<u>Pulpit Point, River North</u>	Level	<u>0.49m</u>	LGA	<u>Hunters Hill</u>
Time	<u>12:50</u>			People	<u>Low</u>		



Co-Ords (MGA)

Start

E 329944
N 6253552

End

E 329896
N 6253537

Seawall Details (Slope, Material, Const. Method, Type):

Relatively new stepped wire mesh gabion basket vertical stepped seawall, five baskets wide at toe to one wide at crest. Gabions are filled with what appears to be sandstone, 150-200mm in diameter. A concrete footpath and timber fence is located directly behind the gabion crest.

Condition Assessment (Slope, Crest, Toe, Backfill):

A number of gabion units that make up the toe have failed and have lost fill material. The vertical face component of the structure is in good condition. If the toe continues to deteriorate, the structural integrity of the entire gabion wall may be threatened.

Excellent
Good
Poor
Failed

X

Assets

Safety fence prevents public access to gabion wall. No other major assets are supported by this structure.

Comments:

Photos HUN_S05-01 to HUN_S05-06.

Photo 1

General view of gabion wall.

Photo 2

Loss of material from gabion baskets at toe.



Seawall Inspection Record - HUN_S07

Date	<u>5/08/09</u>	Locality	<u>Hunters Hill, River North</u>	Level	<u>0.69m</u>	LGA	<u>Hunters Hill</u>
Time	<u>12:21</u>			People	<u>Low-Mid</u>		



Co-Ords (MGA)

Start

E 329248

N 6254188

End

E 329204

N 6254200

Seawall Details (Slope, Material, Const. Method, Type):

At the western extent the structure is a vertical medium sized grouted sandstone block seawall. The crest was approx. 2.5m above the WL at time of insp. The eastern extent is vertical concrete wall which may be capping an older sandstone block seawall as per the western extent. A set of medium sandstone block sea stairs is located mid-way along the structure and are associated with an historic ferry facility.

Condition Assessment (Slope, Crest, Toe, Backfill):

Sandstone blocks are missing grout and are showing severe signs of surface weathering and slumping. Localised block failures were also observed. Surface weathering and cracking of the concrete section of the structure was observed. The sea stairs have lost grout material and are severely weathered.

Excellent

Good

Poor

Failed

X

Assets

A steel safety fence is present along the entire length of the structure. Sea stairs appear to be launch site for adjacent dinghy storage facilities (HUN_F04 and HUN_F05).

Comments:

Two dingy storage facilities are located beyond the crest of this structure (HUN_F04 and HUN_F05) and this inspection report should be read in conjunction with the inspection reports for these facilities. The old ferry wharf shelter structure is also located beyond the crest, however, this was not inspected as part of this project. Photos HUN_S07-01 to HUN_S07-07

Photo 1

Sandstone block section of seawall and sandstone sea stairs showing loss of grout, weathering and block failures.



Photo 2

Concrete section of structure showing surface weathering and cracking.



Seawall Inspection Record - HUN_S08

Date	<u>5/08/09</u>	Locality	<u>Tarban Creek Bridge, Tarban Creek</u>	Level	<u>0.69m</u>	LGA	<u>Hunters Hill</u>
Time	<u>11:45</u>			Tide	<u>Low-Mid</u>		



Co-Ords (MGA)

Start

E	<u>328431</u>
N	<u>6254376</u>

End

E	<u>328353</u>
N	<u>6254388</u>

Seawall Details (Slope, Material, Const. Method, Type):

Vertical medium size block grouted sandstone seawall. A section to the east of the bridge buttress has been replaced.

Condition Assessment (Slope, Crest, Toe, Backfill):

Older sections of the seawall are missing grout and are showing signs of weathering and slumping. Localised block failures were also noted. The new section of wall is in very good condition.

Excellent
Good
Poor
Failed

X

Assets

Although the area is public space the area is heavily vegetated and access to the wall from the road is difficult.
No major assets are supported by the structure.

Comments:

Photos HUN_S08-01 to HUN_S08-05.

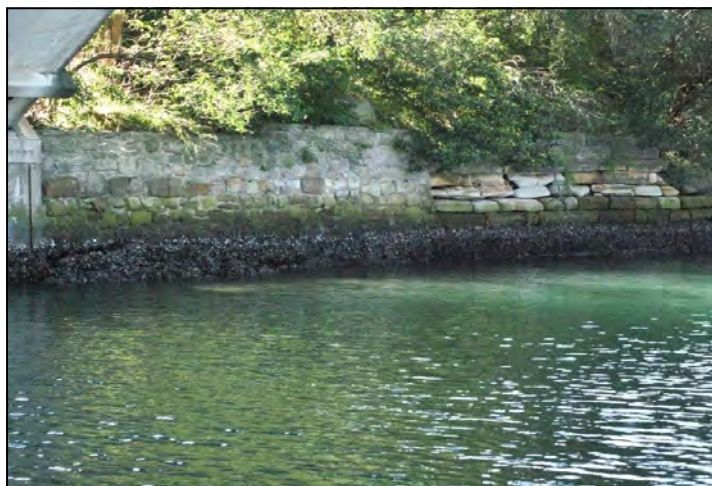
Photo 1

Sandstone block seawall on western side of Tarban Creek Bridge.
Cracking and loss of grout was observed.



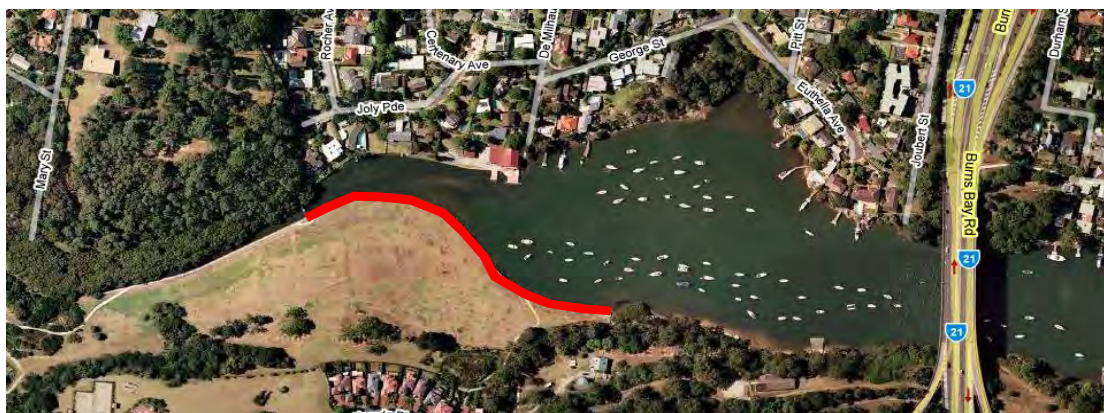
Photo 2

Sandstone block seawall on eastern side of Tarban Creek Bridge showing newer section and older deteriorated section.



Seawall Inspection Record - HUN_S11

Date	<u>5/08/09</u>	Locality	<u>Huntleys Cove, Tarban Creek</u>	Level	<u>0.88m</u>	LGA	<u>Hunters Hill</u>
Time	<u>10:41</u>			Tide	<u>Mid</u>		



Co-Ords (MGA)

Start

E	<u>327811</u>
N	<u>6254395</u>

End

E	<u>328075</u>
N	<u>6254308</u>

Seawall Details (Slope, Material, Const. Method, Type):

Vertical medium to small sized grouted sandstone block seawall. The crest was approx. 1.5m above the water level at time of inspection.

Gabion baskets have been trenched into the muddy seabed at the toe. A public concrete footpath runs along the length of the wall.

Condition Assessment (Slope, Crest, Toe, Backfill):

Majority of grout material has been lost from the structure leading to loss of fines from behind and slumping of both the vertical face of the wall and the concrete footpath beyond. Significant weathering of the sandstone blocks was also observed.

Excellent	<input type="checkbox"/>
Good	<input type="checkbox"/>
Poor	<input checked="" type="checkbox"/>
Failed	<input type="checkbox"/>

Assets

Public footpath is cracked and slumping. No other assets are supported by the structure.

Comments:

The footpath beyond the wall crest is cracking and many defects were marked with crosses at location (WP 206 327942, 6254391).

Photos HUN_S11-01 to HUN_S11-10.

Photo 1

Typical view of structure showing loss of grout and slumping of sandstone blocks.



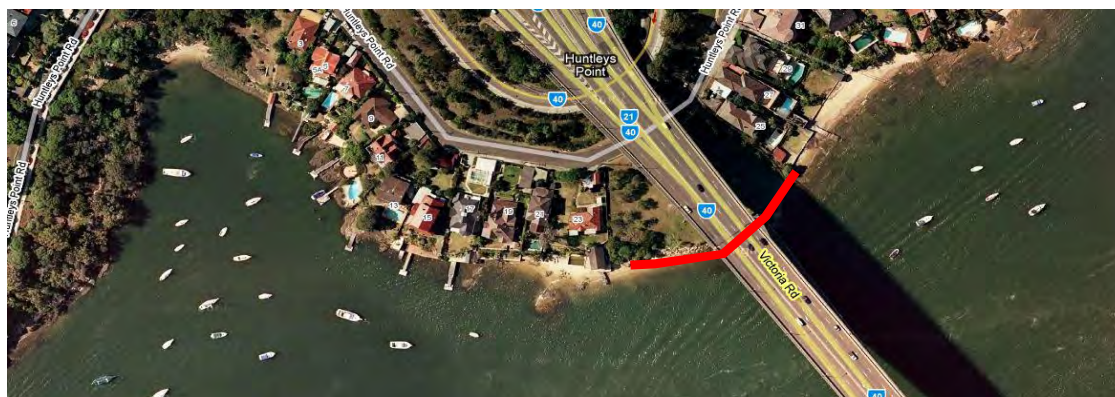
Photo 2

Slumping and cracking of public footpath with marked defects shown.



Seawall Inspection Record - HUN_S12

Date	<u>5/08/09</u>	Locality	<u>Huntleys Point (Gladesville Bridge), River North</u>	Level	<u>0.80m</u>	LGA	<u>Hunters Hill</u>
Time	<u>14:53</u>			Tide	<u>Low-Mid</u>		



Co-Ords (MGA)

Start

E	<u>328558</u>
N	<u>6253971</u>

End

E	<u>328497</u>
N	<u>6253919</u>

Seawall Details (Slope, Material, Const. Method, Type):

Eastern side of bridge is medium size specially placed sandstone revetment with small section of gabion baskets. The western side of bridge is an ad-hoc, poorly sorted, sandstone boulder revetment with a natural sandy shoreline in front.

Condition Assessment (Slope, Crest, Toe, Backfill):

The sandstone block revetment and gabion baskets on the eastern side of the bridge are in a good condition. The sandstone boulder revetment on western side has failed with material from original structure strewn on the sandy beach in front.

Excellent	<input type="checkbox"/>
Good	<input type="checkbox"/>
Poor	<input checked="" type="checkbox"/>
Failed	<input type="checkbox"/>

Assets

Public access is available via landscaped parkland beyond structure crest. No assets are supported by this structure.

Comments:

Photos HUN_S12-01 to HUN_S12-08.

Photo 1

Eastern extent of structure showing specially placed sandstone revetment and gabion baskets.



Photo 2

Ad-hoc poorly sorted sandstone boulder revetment. Structure has collapsed with material strewn across sandy shoreline.



Seawall Inspection Record - HUN_S14

Date	<u>5/08/09</u>	Locality	<u>Henley, River North</u>	Level	<u>1.10</u>	LGA	<u>Hunters Hill</u>
Time	<u>15:54</u>			Tide	<u>Mid</u>		



Co-Ords (MGA)

Start

E 327738
N 6253521

End

E 327723
N 6253511

Seawall Details (Slope, Material, Const. Method, Type):

Small section of vertical medium sized sandstone block seawall founded on bedrock

Condition Assessment (Slope, Crest, Toe, Backfill):

Wall has partially collapsed and appears to be abandoned.

Excellent
Good
Poor
Failed

X

Assets

Access to foreshore is accessible from William Street. No assets are in the vicinity of the structure.

Comments:

Photo HUN_S14-01 and HUN_S14-02.

Photo 1

View of seawall.

Photo 2

Loss of grout, weathering and failure of sandstone blocks.



Seawall Inspection Record - HUN_S15

Date 5/08/09 Locality Henley, River North Level 1.10m LGA Hunters Hill
Time 16:00 Tide Mid



Co-Ords (MGA)

Start

E 327359
N 6253499

End

E 327353
N 6253506

Seawall Details (Slope, Material, Const. Method, Type):

Appears to be old abutment which consists of revetments on sides and a vertical seawall at the front. The entire structure is made from medium sized sandstone blocks with the front face having some grouting present. A 200mm layer of concrete capping has been placed around the crest as has a strip of asphalt at the front face. The crest was approx. 1.5m above the water level at time of inspection.

Condition Assessment (Slope, Crest, Toe, Backfill):

Vertical sandstone block wall that forms front face of structure is missing grout material, a number of block failures were also observed. The revetments on each side of the structure are slumping due to a loss of fine material from behind. Large sinkholes and cracking of concrete capping at crest further confirm the loss of fine material.

Excellent
Good
Poor
Failed

X

Assets

There is no safety rail or structure to differentiate the wall edge. Large sinkholes are being used to hold fishing rods. No other assets are supported by the structure.

Comments:

Photos HUN_S15-01 and HUN_S15-04.

Photo 1

Eastern view of structure. Block failures on front vertical face is shown.



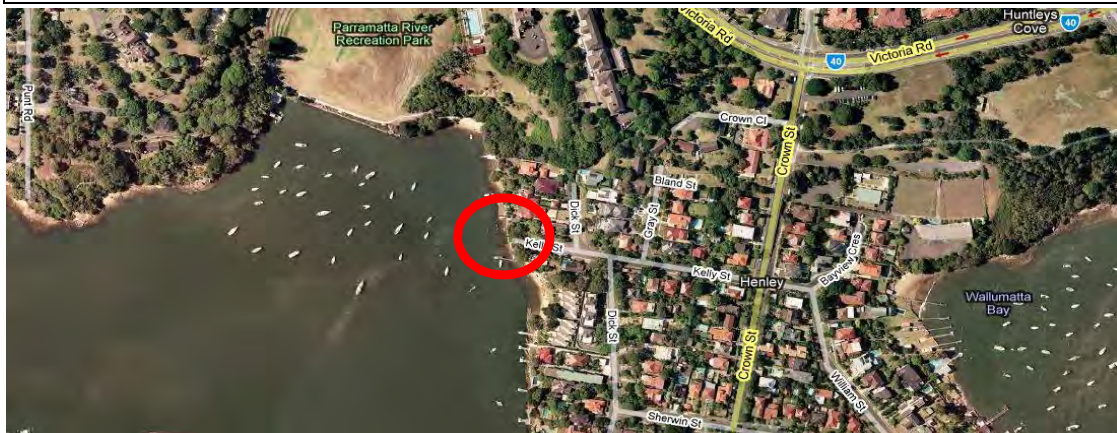
Photo 2

Western section of structure showing extent of slumping of revetment component.



Seawall Inspection Record - HUN_S16

Date	<u>6/08/09</u>	Locality	<u>Bedlam Bay, River North</u>	Level	<u>0.89m</u>	LGA	<u>Hunters Hill</u>
Time	<u>11:54</u>			Tide	<u>Mid</u>		



Co-Ords (MGA)

Start	
E	<u>327284</u>
N	<u>6253809</u>
End	
E	<u>327280</u>
N	<u>6253828</u>

Seawall Details (Slope, Material, Const. Method, Type):

Vertical medium size grouted sandstone block seawall founded on bedrock. Sea stairs have been carved into the bedrock. Public baths that were once here have been abandoned. Timber piles remain but do not support any structure or asset. A steel safety fence runs along the majority of the structure.

Condition Assessment (Slope, Crest, Toe, Backfill):

Sandstone seawall has failed in some locations with blocks strewn across bedrock. At other location all grout is missing with surface weathering and large cavities evident while grout has been replaced at discrete locations long the wall. Steel safety fence is corroding. Timber piles are showing signs of deterioration.

Excellent	<input type="checkbox"/>
Good	<input type="checkbox"/>
Poor	<input checked="" type="checkbox"/>
Failed	<input type="checkbox"/>

Assets

Public access to water is available via carved sea stairs which are mossy and weathered. No major assets are supported by the structure.

Comments:

Dinghies are being stored atop the wall and are discussed in Inspection Record HUN_F15. Photos HUN_S16-01 to HUN_S16-04.

Photo 1

View of structure.

Photo 2

Block failure of seawall.



Seawall Inspection Record - HUN_S17

Date 6/08/09 Locality Bedlam Bay, River North Level 0.89m LGA Hunters Hill
 Time 11:57 Tide Mid



Co-Ords (MGA)

Start

E 327257

N 6253926

End

E 327256

N 6253930

Seawall Details (Slope, Material, Const. Method, Type):

Vertical medium sized sandstone block seawall.

Condition Assessment (Slope, Crest, Toe, Backfill):

Numerous blocks have collapsed and fallen into water below. No grouting was observed. Surface weathering and slumping also evident.

Excellent

Good

Poor

Failed

X

Assets

Structure is located within a public park however access to wall is difficult as the land beyond the wall is heavily vegetated. No other assets are supported by the structure.

Comments:

Photos HUN_S17-01 and HUN_S17-02.

Photo 1

View of structure.

Photo 2

Block failure of seawall.



Facility Inspection Record

- HUN_F14

Date	<u>5/08/09</u>	Locality	<u>Walumatta Bay, Henley</u>	Level	<u>0.80m</u>	LGA	<u>Hunters Hill</u>
Time	<u>15:45</u>			Tide	<u>Low-Mid</u>		



Co-Ords (MGA)

Start

E	<u>327712</u>
N	<u>6253795</u>

Facility Details (Usage, Material, Const. Method, Type):

Timber landing and ramp with informal dinghy storage beneath trees on rocky shoreline.

Condition Assessment:

Timber ramp has partly collapsed and is severely deteriorated. Landing has also deteriorated. No formal dinghy storage structure was observed.

Excellent
Good
Poor
Failed

X

Assets:

Vessels must be launched using failed timber ramp.

Comments:

Photo HUN_F14-01 to HUN_F14-03.

Photo 1

View of dinghy storage area showing deterioration of timber ramp.



Photo 2

Dinghies on timber landing tethered to trees.



Facility Inspection Record

- HUN_F02

Date	<u>5/08/09</u>	Locality	<u>Kellys Bush, Woolwich</u>	Level	<u>0.49m</u>	LGA	<u>Hunters Hill</u>
Time	<u>14:06</u>			Tide	<u>Low</u>		



Co-Ords (MGA)

Start

E 330428

N 6253693

Facility Details (Usage, Material, Const. Method, Type):

Timber landing and stairs with steel connections supported by timber piles which appear to be embedded into rock. Stairs are 1.5m above rocky outcrops and water. Dinghies are tethered to structure and trees on foreshore.

Condition Assessment:

Deterioration of timber landing, stairs and piles was observed. Steel connections are corroding.

Excellent

Good

Poor

Failed

X

Assets:

Access to water is difficult as fouling of the lower sea stairs has occurred making them slippery. Bedrock is also exposed at low tide below the structure. No major assets are affected by this facility.

Comments:

Structure abuts seawall (HUN_S03). Photos HUN_F02-01 to HUN_F02-03

Photo 1

View of structure and adjacent seawall (HUN_S03).

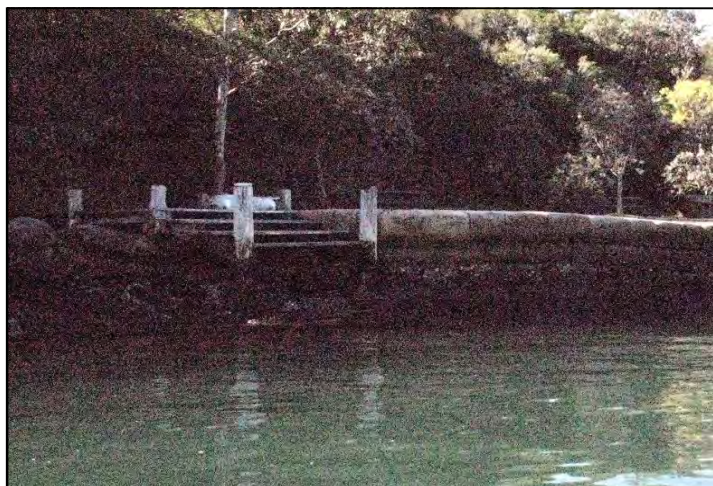


Photo 2

View of structure showing deterioration of timber piles.

