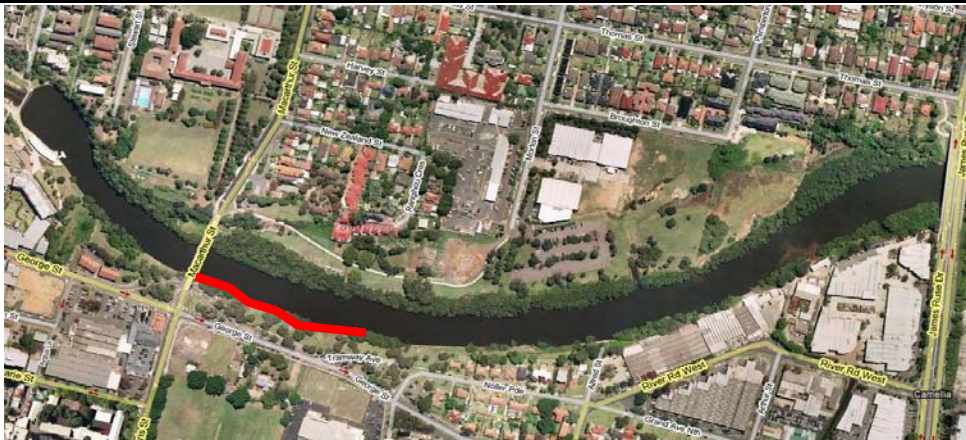


# Seawall Inspection Record - PAR\_S16

Date 21/08/09 Level 0.21m LGA Parramatta  
 Time 14:32 Locality East of Macarthur Street Bridge, River South People Low



## Co-Ords (MGA)

### Start

E 316035

N 6256534

### End

E 316221

N 6256462

## Seawall Details (Slope, Material, Const. Method, Type):

Grouted in places, small/medium sized sandstone block seawall. Concrete slabs are located at the toe at discrete locations as are intermittent mangrove stands. A footpath and public reserve are present beyond the crest which was 2-3m above water level. The foreshore is exposed to vessel wash.

## Condition Assessment (Slope, Crest, Toe, Backfill):

Localised wall failures at the toe and crest were observed. In general, grout is absent from blocks which are slumping. Some section of the wall have been repaired with grout installed between sandstone blocks.

Excellent

Good

Poor

Failed

X

## Assets

The structure supports the adjacent public reserve. No barrier is in place to define the wall edge.

## Comments:

The structure adjoins the southern abutment of the Macarthur Street Bridge which is constructed from sandstone blocks that are weathering and missing grout in places.

Photos of structure are PAR\_S16-01 to PAR\_S16-12.

## Photo 1

View of western extent of structure adjacent to the Macarthur Street Bridge Southern Abutment.

## Photo 2

Block failure at the toe.





# Seawall Inspection Record - PAR\_S17

Date 21/08/09 Locality East of Macarthur St Bridge, River South Level 0.21m LGA Parramatta  
Time 7:40 Tide Low



## Co-Ords (MGA)

### Start

E 316289

N 6256446

### End

E 316369

N 6256444

## Seawall Details (Slope, Material, Const. Method, Type):

Small/medium sized sandstone block seawall. An informal footpath and public reserve are present beyond the crest which was approx.

2.5m above the water level at time of inspection. The foreshore is exposed to vessel wash. A number of storm water outlets are located along the structure.

## Condition Assessment (Slope, Crest, Toe, Backfill):

Localised wall failures at the toe and crest were observed. The blocks are also slumping and weathered.

Excellent

Good

Poor

Failed

<input type="checkbox"/>
<input type="checkbox"/>
<input type="checkbox"/>
<input checked="" type="checkbox"/>

## Assets

Supports adjacent public reserve

## Comments:

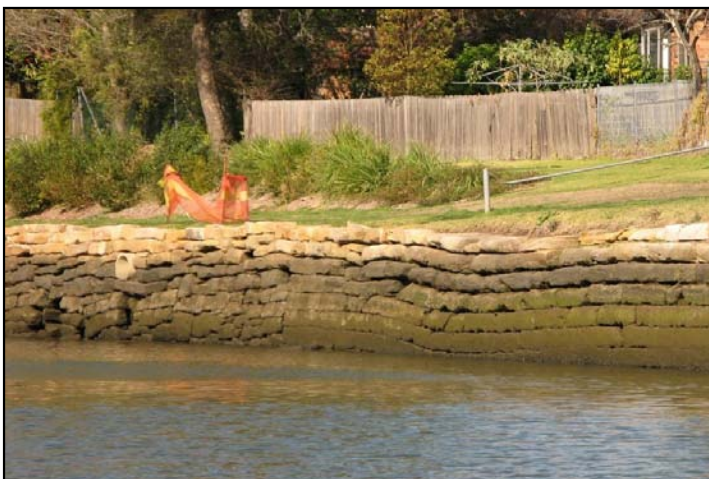
Photos of structure are PAR\_S17-01 to PAR\_S17-06.

## Photo 1

View of structure showing extent of block slumping.

## Photo 2

Block failure at the toe.





# Seawall Inspection Record

- PAR\_S06

Date	31/08/09	Locality	West of Silverwater Bridge, River North	Level	0.84m	LGA	Parramatta
Time	12:46			Tide	Low-Mid		



## Co-Ords (MGA)

### Start

E 319635  
N 6255704

### End

E 318715  
N 6256360

## Seawall Details (Slope, Material, Const. Method, Type):

Grouted, medium sized sandstone blocks revetment with a single row of vertical sandstone blocks at the crest. The eastern extent of the revetment is heavily vegetated with mangroves (PAR\_NS03). The western extent is intermittently vegetated with mangroves. A public footpath is present beyond the structure crest. The revetment also incorporates the Rydalmere vessel Wharf and a number of storm water outlets.

## Condition Assessment (Slope, Crest, Toe, Backfill):

The revetment is failing at discrete locations which correspond to the absence of mangroves exposing the structure to vessel wash. In general, the structure is ungrouted, slumping and the sandstone blocks are weathered. Mangroves that are present in front of the revetment have been undermined leading to failure.

Excellent  
Good  
Poor  
Failed

X

## Assets

The revetment supports the Rydalmere Ferry Wharf structure and there is a loss of grout from the blocks at this location. No other structures are supported by the revetment.

## Comments:

Photos of structure are PAR\_S06-01 to PAR\_S06-23.

## Photo 1

Block failure of revetment.



## Photo 2

Collapsed mangrove in front of revetment.





Seawall Inspection Record - PAR\_S09

Date 21/08/09 Locality Rydalmere Rail Bridge, River North Level 0.21m LGA  
Time 15:19 Tide Low-Mid Parramatta



Co-Ords (MGA)  
Start  
E 317324  
N 6256667  
End  
E 317247  
N 6256692

Seawall Details (Slope, Material, Const. Method, Type):  
Large sandstone boulder revetment beneath and adjacent to the Rydalmere rail bridge within the University of Western Sydney Parramatta Campus. A large storm water outlet is located at the western extent of the foreshore which is constructed from gabions baskets that slope to the water line. An informal walkway is present along the crest.

Condition Assessment (Slope, Crest, Toe, Backfill):  
The revetment has not been constructed to typical engineering standards with no underlayers evident. The structure crest level is inadequate with an erosion scarp present beyond due to vessel wash exposure. A number of the gabion baskets that form the storm water outlet structure at the western extent have failed with all material lost.

Excellent ☐  
Good ☐  
Poor ☐  
Failed ☒

Assets  
The storm water outlet structure may fail if no maintenance is undertaken. The informal public footpath would be inundated during periods of elevated water levels and would be overtopped by vessel wash.

Comments:  
Gabion basket storm water outlet (317255, 6256683). Photos of structure are PAR\_S09-01 to PAR\_S09-10.

Photo 1  
Eastern extent of structure with erosion scarp beyond crest shown.



Photo 2  
Western extent of structure with gabion basket storm water outlet shown.





# Seawall Inspection Record - PAR\_S07

Date	<u>21/08/09</u>	Locality	<u>West of Thackeray Street Bridge, River North</u>	Level	<u>0.64m</u>	LGA	<u>Parramatta</u>
Time	<u>15:35</u>			People	<u>Low-Mid</u>		



## Co-Ords (MGA)

### Start

E 318715  
N 6256360

### End

E 318679  
N 6256349

## Seawall Details (Slope, Material, Const. Method, Type):

Ad-hoc rubble revetment with a vertical brick wall on the crest associated with a private industrial property. The structure is exposed to vessel wash.

## Condition Assessment (Slope, Crest, Toe, Backfill):

The revetment has not been constructed to typical engineering detail. The brick wall at the back of the structure has collapsed with bricks strewn across the revetment slope.

Excellent

Good

Poor

Failed

X

## Assets

The revetment supports the yard of the private industrial property located beyond the structure crest.

## Comments:

Photos of structure are PAR\_S07-01 to PAR\_S07-04.

## Photo 1

View of ad-hoc rubble revetment.

## Photo 2

Failure of brick wall at back of revetment.



# Seawall Inspection Record - PAR\_S04

Date	<u>20/08/09</u>	Locality	<u>Silverwater Bridge, River North</u>	Level	<u>0.67m</u>	LGA	<u>Parramatta</u>
Time	<u>15:23</u>			Tide	<u>Low-Mid</u>		



## Co-Ords (MGA)

### Start

E 319676

N 6255695

### End

E 319653

N 6255695

## Seawall Details (Slope, Material, Const. Method, Type):

Small sandstone block seawall with a concrete slab crest beneath the northern abutment of Silverwater Bridge. Rubble/sand is present in front of the structure toe and a public footpath is present beyond the crest.

## Condition Assessment (Slope, Crest, Toe, Backfill):

The structure has failed with a large section of sandstone blocks missing. The concrete crest has collapsed onto the sandy bank below. Gabions baskets are present to the east (PAR\_S03) and west (PAR\_S05) and have probably been installed to replace other section of failed wall.

Excellent

Good

Poor

Failed

<input type="checkbox"/>
<input type="checkbox"/>
<input type="checkbox"/>
<input checked="" type="checkbox"/>

## Assets

The public footpath does not run along the structure crest but the public access is available to the failed section of wall.

## Comments:

Photos of structure are PAR\_S04-01 to PAR\_S04-08.

## Photo 1

View of small sandstone block seawall beneath Silverwater Bridge.

## Photo 2

Failed section of wall.





# Seawall Inspection Record - PAR\_S22

Date	<u>21/08/09</u>	Locality	<u>East of Rydalmere Rail Bridge, River South</u>	Level	<u>0.54</u>	LGA	<u>Parramatta</u>
Time	<u>13:44</u>			Tide	<u>Low-Mid</u>		



## Co-Ords (MGA)

### Start

E 317504  
N 6256279

### End

E 317694  
N 6256238

## Seawall Details (Slope, Material, Const. Method, Type):

Medium sized sandstone blocks seawall. The western extent of the structure has been replaced with a new, grouted brick seawall.

Intermittent mangrove stands are present at the toe. A private industrial property is located beyond the structure crest.

## Condition Assessment (Slope, Crest, Toe, Backfill):

The majority of the wall has failed due to undermining. The new section of wall at the western extent has also

failed. Mangroves that are in front of the wall have been undermined and have collapsed into the water.

Excellent

Good

Poor

Failed

X

## Assets

The structure supports the adjacent industrial area however there are no issues relating to this at present.

No public access is available

## Comments:

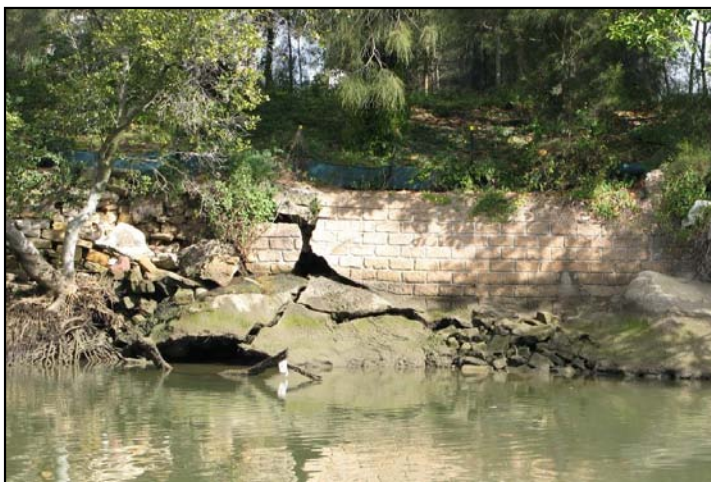
Photos of structure are PAR\_S22-01 to PAR\_S22-07.

## Photo 1

Failure of new section of brick seawall at north western extent.

## Photo 2

Typical section of wall showing sandstone block wall failure and collapse of mangrove.





# Natural Shoreline Inspection Record

- PAR\_NS08

<b>Date</b>	<u>21/08/09</u>	<b>Locality</b>	<u>James Ruse Dr to west of Macarthur St</u>	<b>Level</b>	<u>0.21m</u>	<b>LGA</b>	<u>Parramatta</u>
<b>Time</b>	<u>14:59</u>			<b>Tide</b>	<u>Low</u>		



## Co-Ords (MGA)

Start	WP
E	<u>316955</u>
N	<u>6256713</u>
End	
E	<u>315964</u>
N	<u>6256629</u>

## Details (Vegetation, Slope, Toe):

Muddy shoreline vegetated with mangroves. Some sections of the foreshore have had A-Jacks armour units installed to protect the bank from vessel wash. A public footpath and cycleway is located beyond the bank.

## Condition Assessment:

Erosion observed with undermining and loss of fine material from pneumatophores due to exposure to vessel wash.  
A number of mangroves have collapsed into the water. The A-Jacks units are in good condition with no displacement observed.

Excellent  
Good  
Poor  
Failed

X

## Assets:

Although no issues at present, if erosion continues the footpath and parklands beyond the bank may be threatened in the future.

## Comments:

A-jacks armour units at WP x: 316426, y: 6256496) and x: 316580, y: 6256529  
Photos of foreshore PAR\_NS08-01 to PAR\_NS08-23.

## Photo 1

Undermining and loss of fine material from pneumatophores.



## Photo 2

A-Jacks armour units installed along the shoreline.





# Natural Shoreline Inspection Record

- PAR\_NS12

<b>Date</b>	<u>21/08/09</u>	<b>Locality</b>	<u>East of James Ruse Drive Bridge, South Bank</u>	<b>Level</b>	<u>0.21m</u>	<b>LGA</b>	<u>Parramatta</u>
<b>Time</b>	<u>14:06</u>			<b>Tide</b>	<u>Low</u>		



## Co-Ords (MGA)

Start  
E 316724  
N 6256526

End  
E 316954  
N 6256643

## Details (Vegetation, Slope, Toe):

Anthropogenic fill bank vegetated with mangroves in front of private industrial land.

## Condition Assessment:

Loss of fine material from pneumatophores due to exposure to vessel wash observed. A section without mangroves has collapsed with a large, >2m, erosion scarp present. Fill material has been dumped to the side of the failure in an attempt to impede erosion.

Excellent  
Good  
Poor  
Failed

X

## Assets:

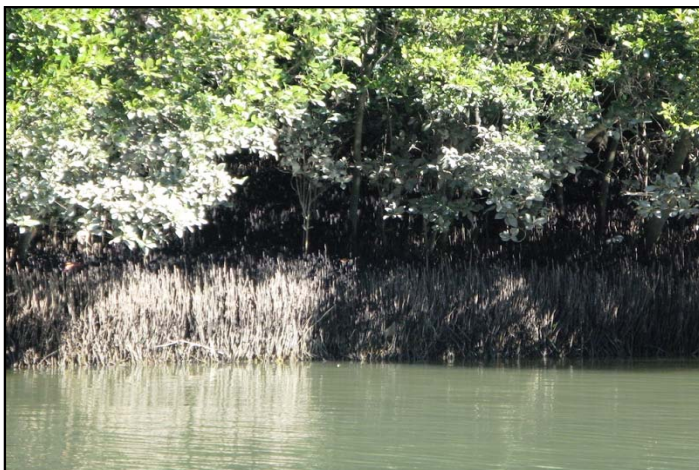
Private industrial buildings are located along the foreshore within close proximity of the erosion scarp and may be threatened if erosion is allowed to continue.

## Comments:

Large erosion scarp is at x: 316798, y: 6256573. Photos of foreshore PAR\_NS12-01 to PAR\_NS12-07.

## Photo 1

Loss of fine material from pneumatophores.



## Photo 2

Collapse of exposed bank in front of private industrial building.





# Natural Shoreline Inspection Record

- PAR\_NS15

<b>Date</b>	<u>21/08/09</u>	<b>Locality</b>	<u>Southeast of Rydalmere Rail Bridge, South Bank</u>	<b>Level</b>	<u>0.21</u>	<b>LGA</b>	<u>Parramatta</u>
<b>Time</b>	<u>13:52</u>			<b>Tide</b>	<u>Low</u>		



## Co-Ords (MGA)

Start  
 E 317285  
 N 6256576

End  
 E 317271  
 N 6256406

## Details (Vegetation, Slope, Toe):

Muddy shoreline vegetated with mangroves. An old steel fence is present for a short section in the middle of the foreshore.

## Condition Assessment:

Erosion observed with undermining and loss of fine material from pneumatophores due to exposure to vessel wash.  
 The steel fence has failed and the surrounding earthen bank is severely eroded.

Excellent  
 Good  
 Poor  
 Failed

X

## Assets:

No public access available and no significant structures are supported by this foreshore.

## Comments:

Photos of foreshore PAR\_NS15-01 to PAR\_NS15-06.

## Photo 1

Loss of fine material and undermining of pneumatophores.



## Photo 2

Failure of fence and bank.





# Natural Shoreline Inspection Record

- PAR\_NS14

<b>Date</b>	<u>21/08/09</u>	<b>Locality</b>	<u>East of James Ruse Drive Bridge, South Bank</u>	<b>Level</b>	<u>0.12m</u>	<b>LGA</b>	<u>Parramatta</u>
<b>Time</b>	<u>14:00</u>			<b>Tide</b>	<u>Low</u>		



## Co-Ords (MGA)

Start

E 316984

N 6256646

End

E 317245

N 6256606

## Details (Vegetation, Slope, Toe):

Muddy shoreline vegetated with mangroves.

## Condition Assessment:

Erosion observed with undermining and loss of fine material from pneumatophores due to exposure to vessel wash.

Excellent

Good

Poor

Failed

X

## Assets:

No public access available and no structures are supported by this foreshore.

## Comments:

Photos of foreshore PAR\_NS14-01 to PAR\_NS14-05.

## Photo 1

Loss of fine material from pneumatophores and collapsed mangrove.



## Photo 2

Undermining of pneumatophores.





# Natural Shoreline Inspection Record

- PAR\_NS17

<b>Date</b>	<u>21/08/09</u>	<b>Locality</b>	<u>Thackeray St Bridge to Duck River Confluence</u>	<b>Level</b>	<u>0.54m</u>	<b>LGA</b>	<u>Parramatta</u>
<b>Time</b>	<u>13:20</u>			<b>People</b>	<u>Low-Mid</u>		



## Co-Ords (MGA)

Start	
E	<u>318508</u>
N	<u>6256249</u>
End	
E	<u>319338</u>
N	<u>6255684</u>

## Details (Vegetation, Slope, Toe):

Muddy shoreline vegetated with mangroves. The bank beyond the mangroves consists of anthropogenic fill material. Private industrial properties occupy the land beyond the foreshore. Two abandoned timber pile wharf facilities and a large concrete stack are located along the shoreline.

## Condition Assessment:

Erosion observed with undermining and loss of fine material from pneumatophores due to exposure to vessel wash. The abandoned timber pile wharves and concrete stack have been undermined.

Excellent  
Good  
Poor  
Failed

X

## Assets:

The bank supports the adjacent industrial area however there are no issues relating to this at present. All structures along the shoreline appear to be abandoned. No public access is available.

## Comments:

Abandoned facilities are located at x: 319224, y: 6255831 and x: 318887, y: 6256232.  
Photos of foreshore PAR\_NS17-01 to PAR\_NS17-15.

## Photo 1

Loss of fine material and undermining of mangroves.



## Photo 2

Abandoned timber pile facility with large erosion scarp behind.





# Natural Shoreline Inspection Record

- PAR\_NS05

<b>Date</b>	<u>21/08/09</u>	<b>Locality</b>	<u>Thackeray St Footbridge to Rydalmere Rail Bridge</u>	<b>Level</b>	<u>0.64m</u>	<b>LGA</b>	<u>Parramatta</u>
<b>Time</b>	<u>15:21</u>			<b>Tide</b>	<u>Low-Mid</u>		



## Co-Ords (MGA)

Start

E 318620

N 6256349

End

E 317324

N 6256667

## Details (Vegetation, Slope, Toe):

Muddy shoreline vegetated with mangroves.

## Condition Assessment:

Erosion observed with undermining and loss of fine material from pneumatophores due to exposure to vessel wash.

A number of mangroves have collapsed into the water.

Excellent

Good

Poor

Failed

X

## Assets:

No public access is available. Private industrial properties are located beyond the mangroves.

## Comments:

Photos of foreshore PAR\_NS05-01 to PAR\_NS05-15.

## Photo 1

Typical view of foreshore, mangroves have collapsed due to undermining.



## Photo 2

Undermining of pneumatophores.





# Natural Shoreline Inspection Record

- PAR\_NS02

<b>Date</b>	<u>20/08/09</u>	<b>Locality</b>	<u>George Kendall Reserve, Ermington</u>	<b>Level</b>	<u>0.24m</u>	<b>LGA</b>	<u>Parramatta</u>
<b>Time</b>	<u>14:16</u>			<b>Tide</b>	<u>Low</u>		



## Co-Ords (MGA)

Start  
E 321318  
N 6256022

End  
E 320428  
N 6255718

## Details (Vegetation, Slope, Toe):

Muddy shoreline vegetated with mangroves. A seawall is present behind the mangroves (PAR\_S01).

## Condition Assessment:

Erosion observed with undermining and loss of fine material from pneumatophores due to exposure to vessel wash.  
A number of mangroves have collapsed into the water.

Excellent  
Good  
Poor  
Failed

X

## Assets:

No public access, no structures along shore.

## Comments:

Areas with failed mangroves are located at x: 321292, y: 6255989 and x: 321091, y: 6255841  
Photos of foreshore PAR\_NS02-01 to PAR\_NS02-14.

## Photo 1

Typical view of foreshore, mangroves have collapsed due to undermining.



## Photo 2

Undermining and loss of fine material from pneumatophores.





- **PAR\_NS04**

**LGA**  
Parramatta



N	6256349
---	---------





# Natural Shoreline Inspection Record

- PAR\_NS06

<b>Date</b>	<u>21/08/09</u>	<b>Locality</b>	<u>Rydalmere Rail Bridge to James Ruse Drive</u>	<b>Level</b>	<u>0.21</u>	<b>LGA</b>	<u>Parramatta</u>
<b>Time</b>	<u>15:11</u>			<b>Tide</b>	<u>Low</u>		



## Co-Ords (MGA)

Start

E 317247

N 6256692

End

E 316990

N 6256719

## Details (Vegetation, Slope, Toe):

Muddy shoreline vegetated with mangroves and weeds. Rubble and rocky outcrops are present at the water line. The foreshore is exposed to vessel wash.

## Condition Assessment:

Erosion observed with undermining and loss of fine material from pneumatophores due to exposure to vessel wash.

A number of mangroves have collapsed into the water.

Excellent

Good

Poor

Failed

X

## Assets

No public access is available. The grounds of the University of Western Sydney Parramatta Campus are located beyond the bank.

## Comments:

Photos of foreshore PAR\_NS06-01 to PAR\_NS06-07.

## Photo 1

Typical view of foreshore, mangroves and other vegetation are collapsing into the water



## Photo 2

Undermining of pneumatophores.





# Natural Shoreline Inspection Record

- PAR\_NS07

<b>Date</b>	<u>21/08/09</u>	<b>Locality</b>	<u>Beneath James Ruse Drive</u>	<b>Level</b>	<u>0.21m</u>	<b>LGA</b>	<u>Parramatta</u>
<b>Time</b>	<u>15:09</u>			<b>Tide</b>	<u>Low</u>		



## Co-Ords (MGA)

### Start

E 316990

N 6256719

### End

E 316955

N 6256713

## Details (Vegetation, Slope, Toe):

Muddy shoreline with no vegetation. Sandstone boulders are present at the toe of bank. Large vertical timber fenders are in place in front of the bank to protect the bridge supports.

## Condition Assessment:

A large erosion scarp, approximately 500mm, is present along the entire foreshore. Sandstone blocks at the toe appear to be placed in an attempt to mitigate erosion.

Excellent

Good

Poor

Failed

X

## Assets:

No public access is available and no structures are supported by the foreshore.

## Comments:

Photos of foreshore PAR\_NS07-01 to PAR\_NS07-04.

## Photo 1

Erosion scarp east of James Ruse Drive with timber fenders shown.

## Photo 2

Erosion scarp behind timber fenders directly under James Ruse Drive.





# Natural Shoreline Inspection Record

- PAR\_NS13

<b>Date</b>	<u>21/08/09</u>	<b>Locality</b>	<u>Beneath James Ruse Drive, South Bank</u>	<b>Level</b>	<u>0.21m</u>	<b>LGA</b>	<u>Parramatta</u>
<b>Time</b>	<u>14:04</u>			<b>Tide</b>	<u>Low</u>		



## Co-Ords (MGA)

Start  
E 316954  
N 6256643

End  
E 316984  
N 6256646

## Details (Vegetation, Slope, Toe):

Muddy shoreline with no vegetation. Large vertical timber fenders are in place in front of the bridge supports.

## Condition Assessment:

A large erosion scarp of approximately 1m is present along the entire foreshore.

Excellent  
Good  
Poor  
Failed

X

## Assets:

No formal public access is available, however, a number of homeless people are using the bank as a temporary shelter. No structures are supported by the foreshore.

## Comments:

Photos of foreshore PAR\_NS13-01 to PAR\_NS13-08.

## Photo 1

Earthen bank beneath James Ruse Drive.

## Photo 2

The large erosion scarp at the foreshore.





# Natural Shoreline Inspection Record

- PAR\_NS16

<b>Date</b>	<u>21/08/09</u>	<b>Locality</b>	<u>West of Thackeray St Footbridge, South Bank</u>	<b>Level</b>	<u>0.54m</u>	<b>LGA</b>	<u>Parramatta</u>
<b>Time</b>	<u>13:35</u>			<b>People</b>	<u>Low-Mid</u>		



## Co-Ords (MGA)

Start

E 317772  
N 6256223

End

E 318382  
N 6256134

## Details (Vegetation, Slope, Toe):

Muddy shoreline vegetated with mangroves. The bank beyond the mangroves consists of anthropogenic fill material. Private industrial properties occupy the land beyond this foreshore.

## Condition Assessment:

Erosion observed with undermining and loss of fine material from pneumatophores due to exposure to vessel wash.  
A section of bank with no mangroves, adjacent to seawall PAR\_S23 has also failed.

Excellent  
Good  
Poor  
Failed

X

## Assets:

No public access available and no significant structures are supported by this foreshore.

## Comments:

Photos of foreshore PAR\_NS16-01 to PAR\_NS16-11.

## Photo 1

Failure of bank adjacent to seawall PAR\_S23.

## Photo 2

Loss of fine material and undermining of mangroves.





# Natural Shoreline Inspection Record

- PAR\_NS18

<b>Date</b>	<u>21/08/09</u>	<b>Locality</b>	<u>Duck River to Parramatta River Confluence</u>	<b>Level</b>	<u>0.54m</u>	<b>LGA</b>	<u>Parramatta</u>
<b>Time</b>	<u>12:56</u>			<b>Tide</b>	<u>Low-Mid</u>		



## Co-Ords (MGA)

Start

E 319385

N 6255605

End

E 319157

N 6255091

## Details (Vegetation, Slope, Toe):

Muddy shoreline vegetated with mangroves. The Shell Oil Refinery is located on the land beyond the foreshore.

## Condition Assessment:

Erosion observed with undermining and loss of fine material from pneumatophores due to exposure to vessel wash. The condition of the shoreline improves upstream of the confluence in the Duck River.

Excellent

Good

Poor

Failed

X

## Assets:

The bank supports the adjacent industrial area however there are no issues relating to this at present.  
No public access is available.

## Comments:

Photos of foreshore PAR\_NS18-01 to PAR\_NS18-16.

## Photo 1

Loss of fine material and undermining of mangroves at confluence.



## Photo 2

Loss of fine material from pneumatophores upstream of confluence in the Duck River.





# Natural Shoreline Inspection Record

PAR\_NS03

AECOM

<b>Date</b>	<u>31/08/09</u>	<b>Locality</b>	<u>Eric Primrose Reserve, Ermington</u>	<b>Level</b>	<u>0.84m</u>	<b>LGA</b>	<u>Parramatta</u>
<b>Time</b>	<u>12:46</u>			<b>Tide</b>	<u>Low-Mid</u>		



## Co-Ords (MGA)

Start  
E 319620  
N 6255707

End  
E 319336  
N 6255861

## Details (Vegetation, Slope, Toe):

Muddy shoreline vegetated with mangroves. A seawall is present behind the mangroves (PAR\_S06).

## Condition Assessment:

Erosion observed with undermining and loss of fine material from pneumatophores due to exposure to vessel wash.

A number of mangroves have collapsed into the water.

Excellent

Good

Poor

Failed

X

## Assets:

A public footpath runs along the crest of the adjacent seawall however there is no formal access to the mangroves along the foreshore.

## Comments:

Photos of foreshore PAR\_NS03-01 to PAR\_NS03-15.

## Photo 1

Typical view of foreshore, mangroves have collapsed due to undermining.



## Photo 2

Vessel wash at foreshore.

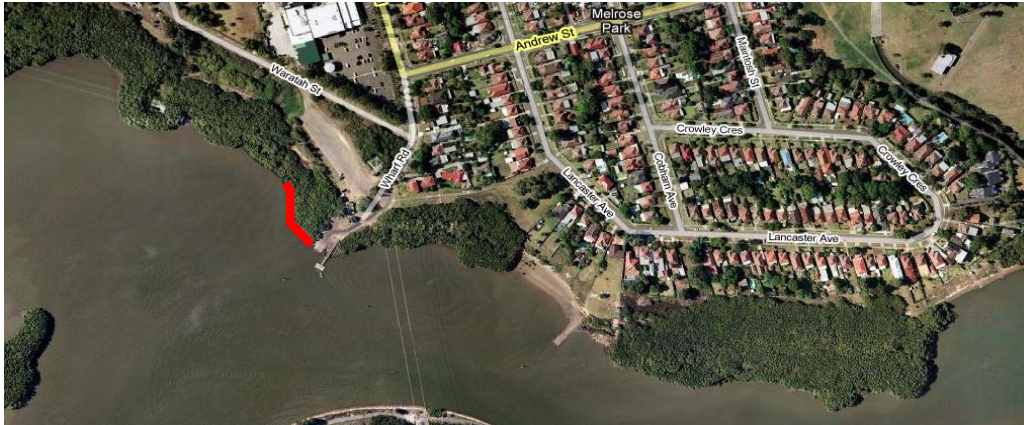




# Natural Shoreline Inspection Record

- PAR\_NS01

<b>Date</b>	<u>20/08/09</u>	<b>Locality</b>	<u>West of West Ryde Wharf</u>	<b>Level</b>	<u>0.24</u>	<b>LGA</b>	<u>Parramatta</u>
<b>Time</b>	<u>14:03</u>			<b>Tide</b>	<u>Low</u>		



## Co-Ords (MGA)

Start

E 321641

N 6256271

End

E 321626

N 6256300

## Details (Vegetation, Slope, Toe):

Muddy/rocky shoreline vegetated with mangroves.

## Condition Assessment:

Erosion observed with undermining and loss of fine material from pneumatophores due to exposure to vessel wash.

Some trees are collapsing into water.

Excellent

Good

Poor

Failed

X

## Assets:

No public access, no structures along shore.

## Comments:

Photos of foreshore PAR\_NS01-01 and PAR\_NS01-02.

## Photo 1

Typical view of foreshore.

## Photo 2

Loss of fine material from pneumatophores.

